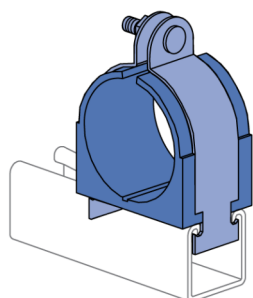
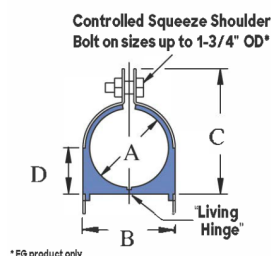
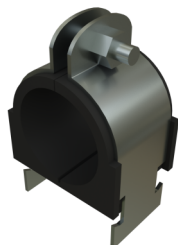


## Cush-A-Clamp® - 1/4" thru 6-1/8" (1-5/8" Series)

Our Cushion Clamps are available in ElectroGalvanized (EG).

### Features

- Shock and vibration absorption
- Noise reduction
- Galvanic corrosion prevention
- Thermoplastic elastomer
- Temperature range: -50°F to +275°F



| Catalog Number | Trade Size | Gauge | Material Type         | Surface Finish    | Part Weight (lb/ea) | Standard Package Weight (lb) |
|----------------|------------|-------|-----------------------|-------------------|---------------------|------------------------------|
| 026CC034S      |            |       | Steel                 | ElectroGalvanized | 0.58                | 5.8                          |
| 032CC042S      |            |       | Steel                 | ElectroGalvanized | 0.76                | 7.6                          |
| 056CC066S      |            |       | Stainless Steel - 316 |                   | 1.3                 | 6.5                          |
| 106N114 ZD     |            |       | Steel                 | ElectroGalvanized | 1.4                 | 7                            |
| 106N114 SS     |            |       | Stainless Steel - 304 |                   | 1.4                 | 7                            |
| 004T008 EG     | 1/4        |       | Steel                 | ElectroGalvanized | 0.1                 | 2.5                          |
| 004T008 SS     | 1/4        | 12    | Stainless Steel - 304 |                   | 0.1                 | 2.5                          |
| 006T010 EG     | 1/4        | 12    | Steel                 | ElectroGalvanized | 0.11                | 2.75                         |
| 006T010 SS     | 1/4        |       | Stainless Steel - 304 |                   | 0.11                | 2.75                         |
| 009N012 EG     | 1/4        |       | Steel                 | ElectroGalvanized | 0.13                | 3.25                         |
| 009N012 SS     | 1/4        |       | Stainless Steel - 304 |                   | 0.13                | 3.25                         |
| 008T012 EG     | 3/8        |       | Steel                 | ElectroGalvanized | 0.13                | 3.25                         |
| 008T012 SS     | 3/8        |       | Stainless Steel - 304 |                   | 0.13                | 3.25                         |
| 011N014 EG     | 3/8        |       | Steel                 | ElectroGalvanized | 0.14                | 3.5                          |
| 011N014 SS     | 3/8        |       | Stainless Steel - 304 |                   | 0.14                | 3.5                          |
| 010T014 EG     | 1/2        |       | Steel                 | ElectroGalvanized | 0.14                | 3.5                          |
| 010T014 SS     | 1/2        |       | Stainless Steel - 304 |                   | 0.14                | 3.5                          |
| 014N018 EG     | 1/2        |       | Steel                 | ElectroGalvanized | 0.15                | 3.75                         |
| 014N018 SS     | 1/2        |       | Stainless Steel - 304 |                   | 0.15                | 3.75                         |
| 012T016 EG     | 5/8        |       | Steel                 | ElectroGalvanized | 0.14                | 3.5                          |
| 012T016 SS     | 5/8        |       | Stainless Steel - 304 |                   | 0.14                | 3.5                          |

| Catalog Number | Trade Size | Gauge | Material Type         | Surface Finish    | Part Weight (lb/ea) | Standard Package Weight (lb) |
|----------------|------------|-------|-----------------------|-------------------|---------------------|------------------------------|
| 014T018 EG     | ¾          |       | Steel                 | Electrogalvanized | 0.15                | 3.75                         |
| 017N022 EG     | ¾          |       | Steel                 | Electrogalvanized | 0.17                | 4.25                         |
| 017N022 SS     | ¾          |       | Stainless Steel - 304 |                   | 0.17                | 4.25                         |
| 016T020 EG     | 1          |       | Steel                 | Electrogalvanized | 0.17                | 4.25                         |
| 016T020 SS     | 1          |       | Stainless Steel - 304 |                   | 0.17                | 4.25                         |
| 018T022 EG     | 1          |       | Steel                 | Electrogalvanized | 0.18                | 1.8                          |
| 018T022 SS     | 1          |       | Stainless Steel - 304 |                   | 0.18                | 1.8                          |
| 021N026 EG     | 1          |       | Steel                 | Electrogalvanized | 0.19                | 1.9                          |
| 021N026 SS     | 1          |       | Stainless Steel - 304 |                   | 0.19                | 1.9                          |
| 020T024 EG     | 1¼         |       | Steel                 | Electrogalvanized | 0.18                | 1.8                          |
| 020T024 SS     | 1¼         |       | Stainless Steel - 304 |                   | 0.18                | 1.8                          |
| 022T026 EG     | 1¼         |       | Steel                 | Electrogalvanized | 0.2                 | 2                            |
| 022T026 SS     | 1¼         |       | Stainless Steel - 304 |                   | 0.2                 | 2                            |
| 027N032 EG     | 1¼         |       | Steel                 | Electrogalvanized | 0.35                | 3.5                          |
| 027N032 SS     | 1¼         |       | Stainless Steel - 304 |                   | 0.35                | 3.5                          |
| 024N028 EG     | 1½         |       | Steel                 | Electrogalvanized | 0.33                | 3.3                          |
| 024N028 SS     | 1½         |       | Stainless Steel - 304 |                   | 0.33                | 3.3                          |
| 026N030 EG     | 1½         |       | Steel                 | Electrogalvanized | 0.35                | 3.5                          |
| 026N030 SS     | 1½         |       | Stainless Steel - 304 |                   | 0.35                | 3.5                          |
| 028N032 EG     | 1¾         |       | Steel                 | Electrogalvanized | 0.37                | 3.7                          |
| 028N032 SS     | 1¾         |       | Stainless Steel - 304 |                   | 0.37                | 3.7                          |
| 030N034 EG     | 1⅞         |       | Steel                 | Electrogalvanized | 0.39                | 3.9                          |
| 030N034 SS     | 1⅞         |       | Stainless Steel - 304 |                   | 0.39                | 3.9                          |
| 032N036 EG     | 2          |       | Steel                 | Electrogalvanized | 0.41                | 4.1                          |
| 032N036 SS     | 2          |       | Stainless Steel - 304 |                   | 0.41                | 4.1                          |
| 032N036 ST     | 2          |       | Stainless Steel - 316 |                   | 0.41                | 4.1                          |
| 034N040 EG     | 2⅞         |       | Steel                 | Electrogalvanized | 0.46                | 4.6                          |
| 034N040 SS     | 2⅞         |       | Stainless Steel - 304 |                   | 0.46                | 4.6                          |
| 038N044 EG     | 2¾         |       | Steel                 | Electrogalvanized | 0.47                | 4.7                          |
| 038N044 SS     | 2¾         |       | Stainless Steel - 304 |                   | 0.47                | 4.7                          |
| 040N046 EG     | 2½         |       | Steel                 | Electrogalvanized | 0.49                | 4.9                          |
| 040N046 SS     | 2½         |       | Stainless Steel - 304 |                   | 0.49                | 4.9                          |
| 042N048 EG     | 2½         |       | Steel                 | Electrogalvanized | 0.51                | 2.55                         |
| 042N048 ST     | 2½         |       | Stainless Steel - 316 |                   | 0.49                | 4.9                          |
| 046N052 EG     | 2⅞         |       | Steel                 | Electrogalvanized | 0.55                | 2.75                         |
| 046N052 SS     | 2⅞         |       | Stainless Steel - 304 |                   | 0.55                | 2.75                         |
| 050N054 EG     | 3          |       | Steel                 | Electrogalvanized | 0.6                 | 3                            |
| 050N054 SS     | 3          |       | Stainless Steel - 304 |                   | 0.6                 | 3                            |
| 050N056 EG     | 3⅞         |       | Steel                 | Electrogalvanized | 0.6                 | 3                            |
| 056N062 EG     | 3½         |       | Steel                 | Electrogalvanized | 0.64                | 3.2                          |
| 056N062 SS     | 3½         |       | Stainless Steel - 304 |                   | 0.64                | 3.2                          |
| 072N080 EG     | 4½         |       | Steel                 | Electrogalvanized | 1.1                 | 5.5                          |
| 072N080 SS     | 4½         |       | Stainless Steel - 304 |                   | 1.1                 | 5.5                          |
| 082N090 EG     | 5⅞         |       | Steel                 | Electrogalvanized | 1.25                | 6.25                         |
| 106N114 EG     | 6          |       | Steel                 | Electrogalvanized | 1.4                 | 7                            |
| 098N106 EG     | 6⅞         |       | Steel                 | Electrogalvanized | 1.3                 | 13                           |